



MEADOW VIEW, Epping Lane, Stapleford Tawney,
Asking Price £1,595,000

MILLERS

NEW HOMES



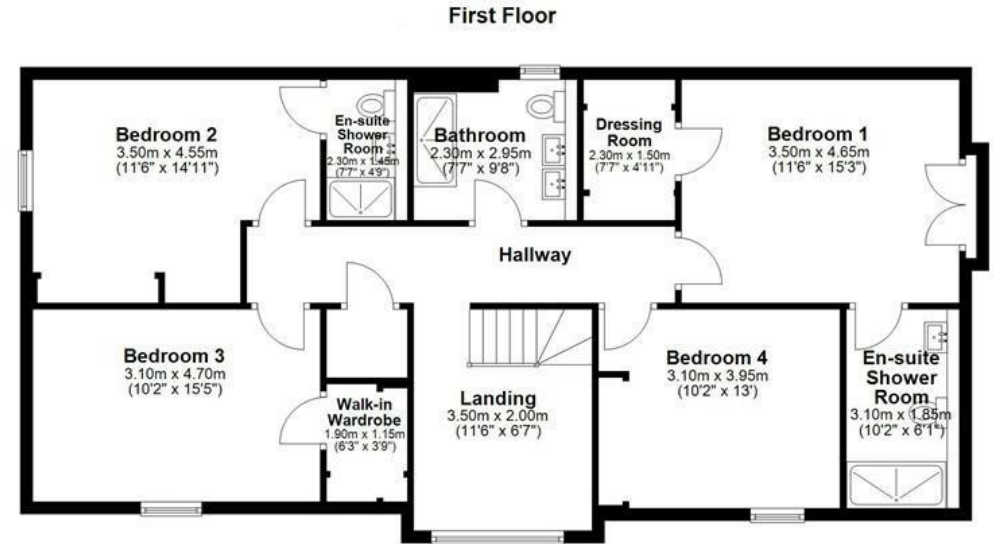
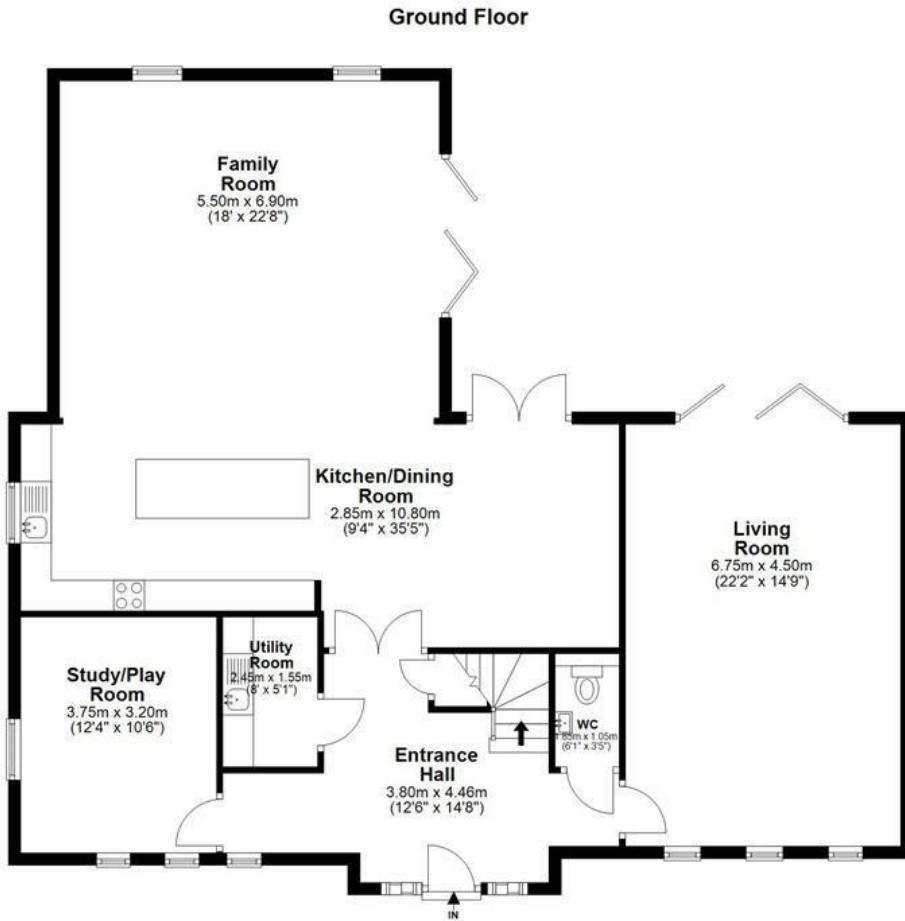
Tucked away behind private security gates, Meadow View is a collection of just four unique luxury homes, each thoughtfully designed and nestled in the gentle hills of the Epping Forest district. Here, you can enjoy the calm of the countryside, with the charming villages of Theydon Bois and Stapleford Tawney close by. Despite the peaceful setting, London is within easy reach, and local shops and amenities are just a short drive away.

MILLERS

NEW HOMES

Plot 3 welcomes you with its elegant, detached design and offers around 2,774 square feet of thoughtfully arranged living space. At the centre of the home, a bespoke Stoneham kitchen flows into a bright dining and family area, where you can look out over the formal gardens and open fields beyond. There is also a separate sitting room for quiet evenings, a dedicated study for working from home, and a practical utility room, all designed to make daily life comfortable and flexible.

Upstairs, you will find four spacious bedrooms, including a principal suite with its own dressing room and en-suite, as well as further en-suite bedrooms and a stylish family bathroom. Step outside to discover a private driveway and walled gardens that open directly onto rolling fields, offering a sense of peace and space that is hard to find.



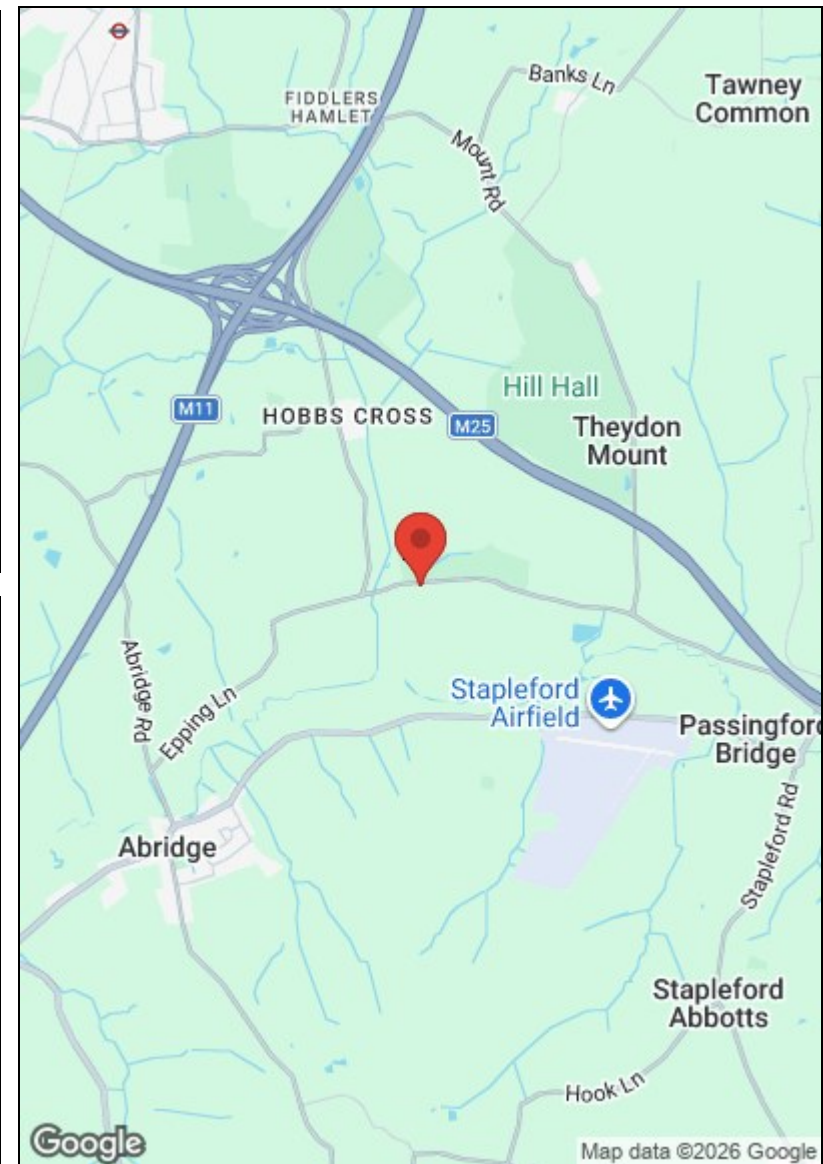
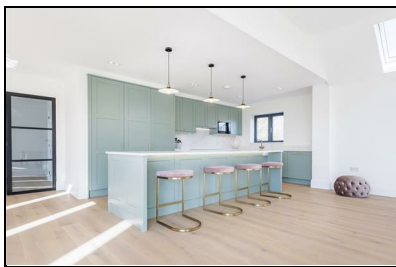
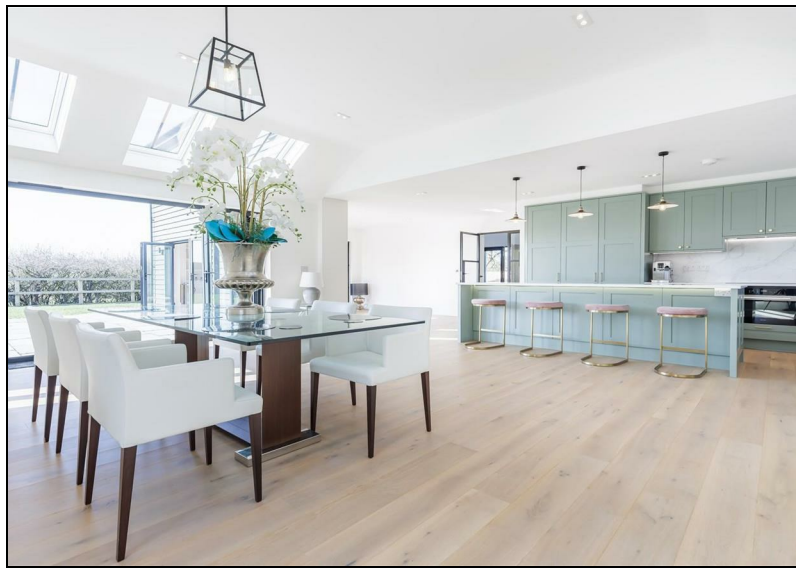
**Meadow Views
Stapleford Tawney
Plot 3**

Total area : approx. 257.3 sq metres (2770 sq feet)

Our floor plans are intended to give a general indication of the proposed floor layout only and may vary in the finished building and overall footage

Directions

From Miller's office at 229 High Street, Epping CM16 4BP continue north along the High Street turning right into Stonards Hill, just past Theydon Grove development and opposite the EFDC Council offices, proceed to the T junction and turn left heading towards Theydon Mount and passing Hill Hall on your right continue to the T junction turn right into Epping Lane and continue until you reach the Meadow Views development on your left-hand side.



Viewing Please contact our Millers Office on 01992 560555 if you wish to arrange a viewing appointment for this property or require further information.

These particulars, whilst believed to be accurate are set out as a general outline only for guidance and do not constitute any part of an offer or contract. Intending purchasers should not rely on them as statements of representation of fact, but must satisfy themselves by inspection or otherwise as to their accuracy. No person in this firm's employment has the authority to make or give any representation or warranty in respect of the property.

229 High Street, Epping, Essex, CM16 4BP

Tel: 01992 560555 | Email: sales@millersepping.co.uk

www.millers-portfoliohomes.co.uk